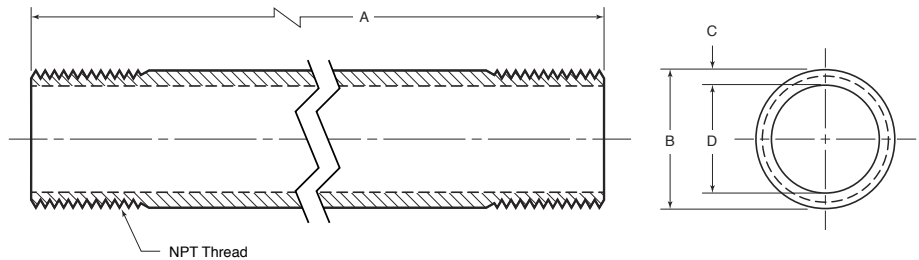
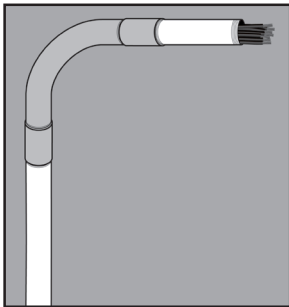


# STAINLESS STEEL CONDUIT



## APPLICATION

- Rigid/Heavywall, Schedule 40
- Provides a means of protection for wiring and cable in electrical systems
- Threaded on both ends, NPT
- Offered in Type 316 SS and Type 304 SS
- Supplied complete with one coupling and a color-coded thread protector for opposite end
- Stocked in 10' lengths; custom lengths can be made available upon request
- Manufactured in stainless steel to help prevent corrosion
- Can be installed using ordinary hand tools and require little maintenance or repair
- Provided in a bright, polished finish that does not require touch up or painting



\*shown without coupling

## PRODUCT DETAILS

**Material:**  
316 SS and 304 SS

**Standards:**  
ASTM A312

**Country of Origin:**  
Manufactured in USA

**UL File Number:**  
DYWV.E300683  
(Standard 6A)

**Canada UL File Number:**  
DYWV7.E300683  
(Standard 6A)

Part Number	Size	Weight/ Stick (lbs.)	Threads	Length w/o Coupling "A"	Outside Diameter "B"	Wall Thickness "C"	Inside Diameter "D"
CND50	½ in.	8	14	9-11-¼	0.84	0.11	0.62
CND75	¾ in.	11	14	9-11-¼	1.05	0.11	0.82
CND100	1 in.	16	11-½	9-11	1.32	0.13	1.05
CND125	1¼ in.	22	11-½	9-11	1.66	0.14	1.38
CND150	1½ in.	26	11-½	9-11	1.90	0.15	1.61
CND200	2 in.	35	11-½	9-11	2.38	0.15	2.07
CND250	2½ in.	55	8	9-10-½	2.88	0.20	2.47
CND300	3 in.	72	8	9-10-½	3.50	0.22	3.07
CND400	4 in.	100	8	9-10-¼	4.50	0.24	4.03

Type 316 SS part numbers listed above; Type 304 SS products are denoted by adding "-304SS."  
For example: CND75-304SS.



© 2015 GIBSON STAINLESS & SPECIALTY, INC. - REV 12/2015

PO BOX 847, GREENSBURG, PA 15601  
PHONE: 1-800-945-4316 • FAX: 724-838-1544

WEB: GIBSONSTAINLESS.COM